

FRESH

P H O T O   H O U S E







FRESH  
P H O T O   H O U S E

## Welcome to Fresh Photo House

Londons premier interior and architecture photographers

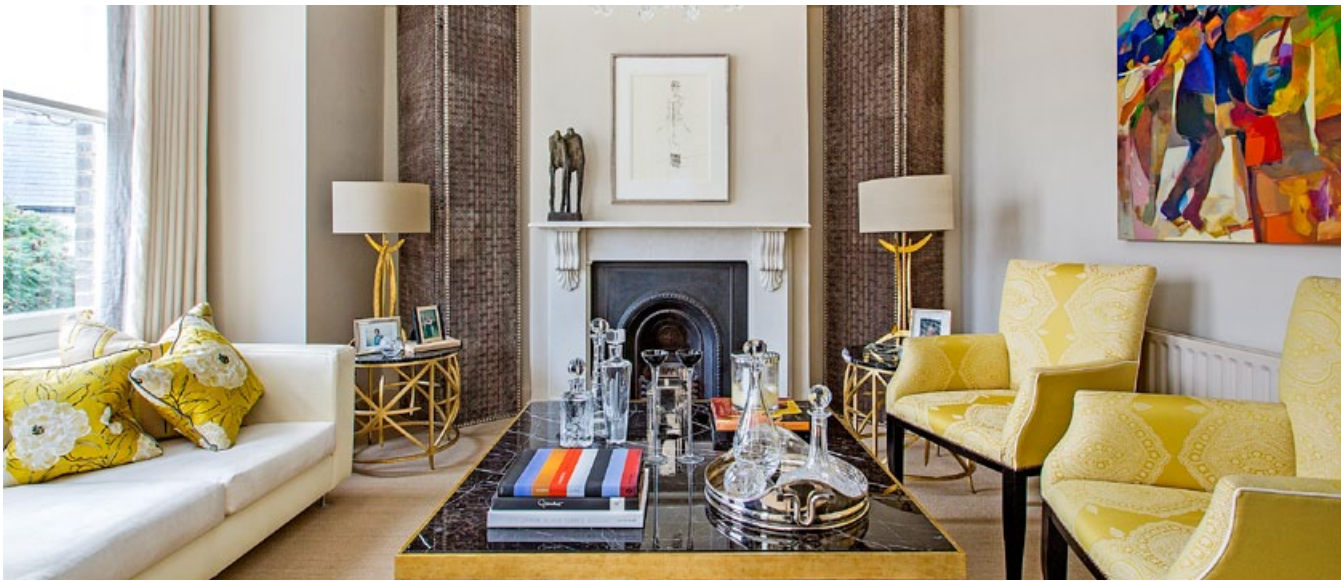
We are passionate about providing our clients with the best photographic solutions

Please take a look at our portfolio and immerse yourself in our world.

















































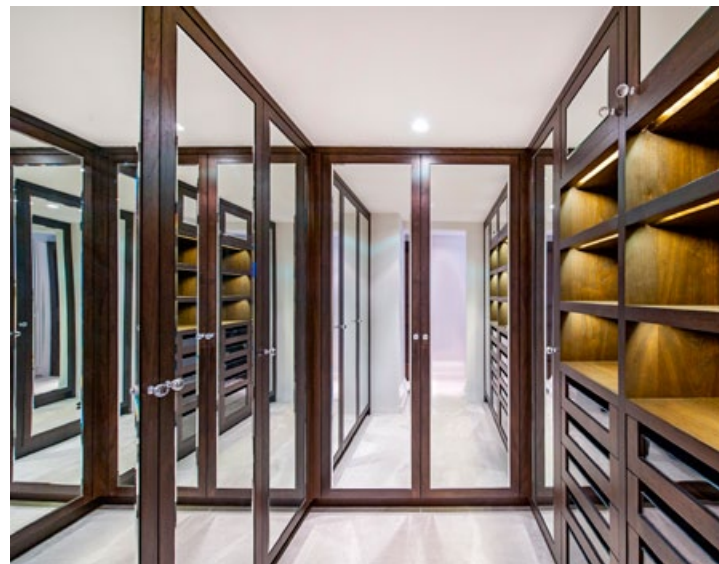
















































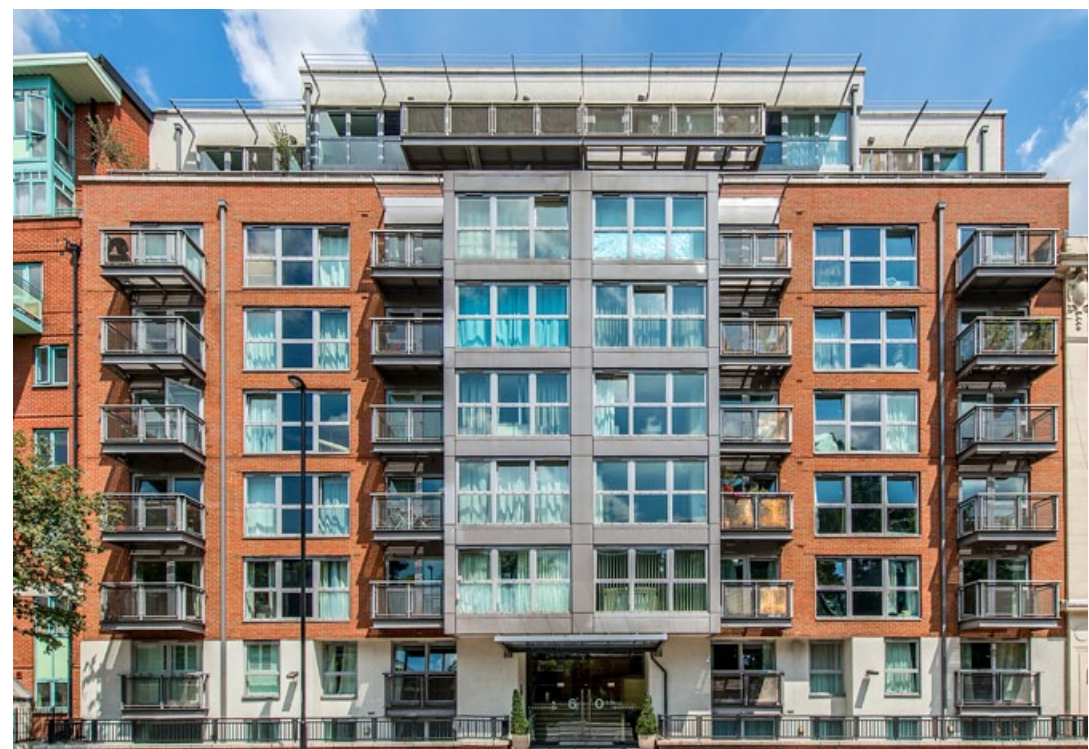




















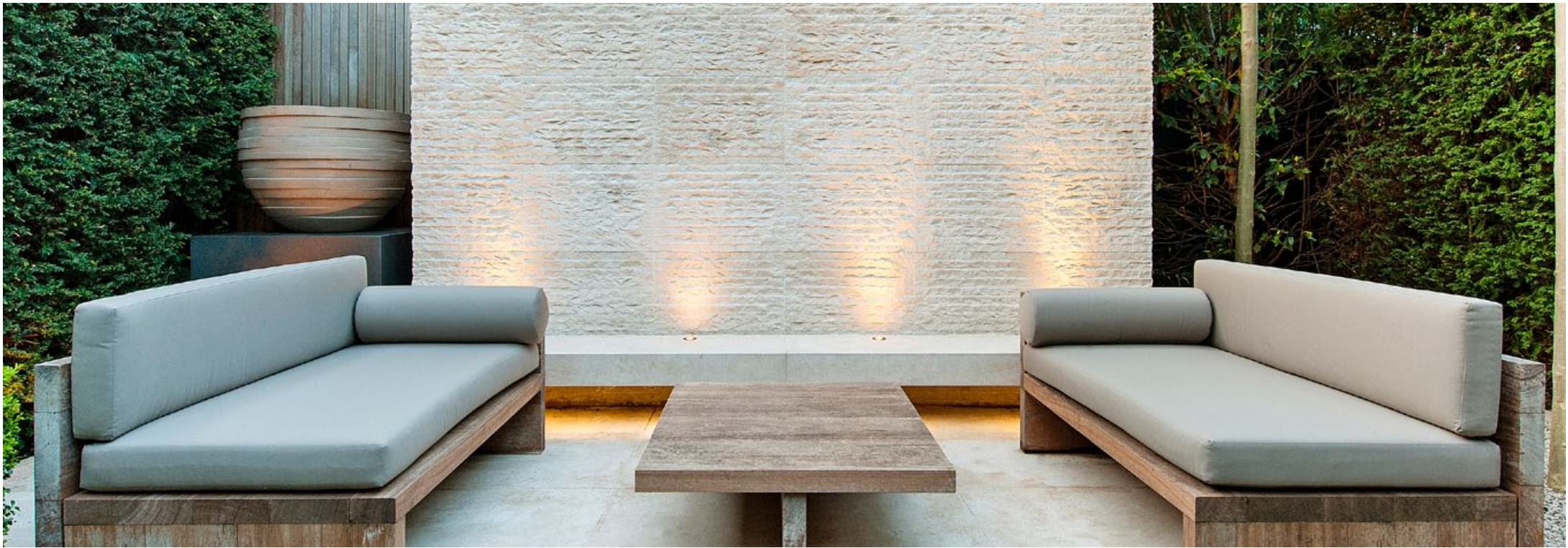






































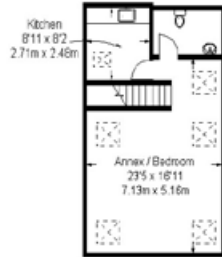




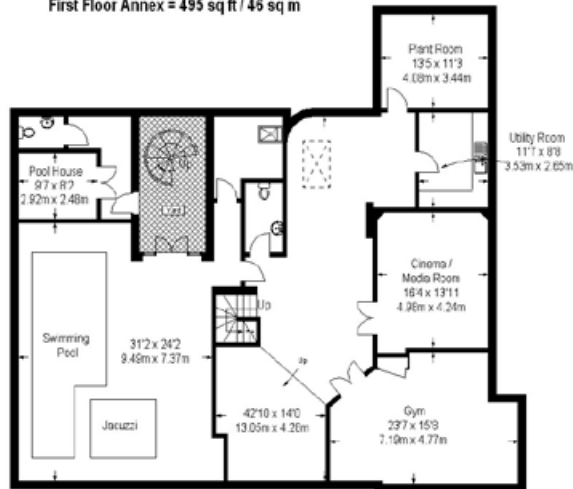
# Westmead

Approximate Gross Internal Area (Excluding Void / Eaves Storage/ Including Garage)

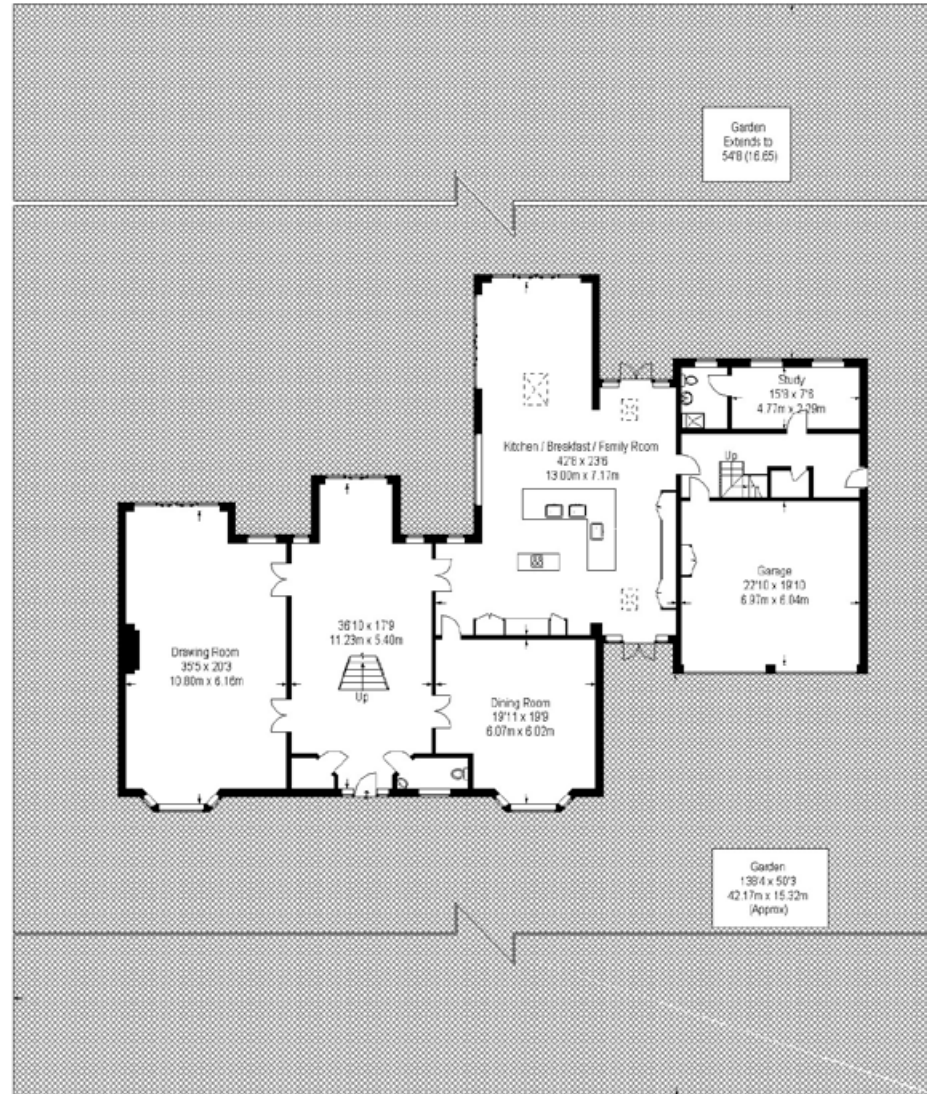
9530 sq ft / 880 sq m  
Eaves Storage/ Reduced Headroom = 54 sq ft / 5 sq m  
Total = 9584 sq ft / 885 sq m



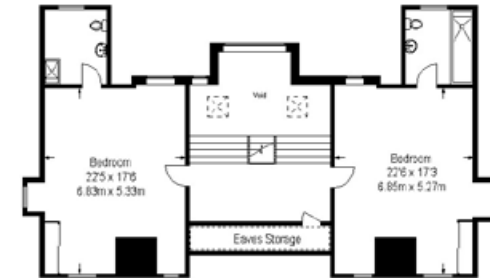
First Floor Annex = 495 sq ft / 46 sq m



Lower Ground Floor = 2626 sq ft / 244 sq m



Ground Floor = 3498 sq ft / 325 sq m

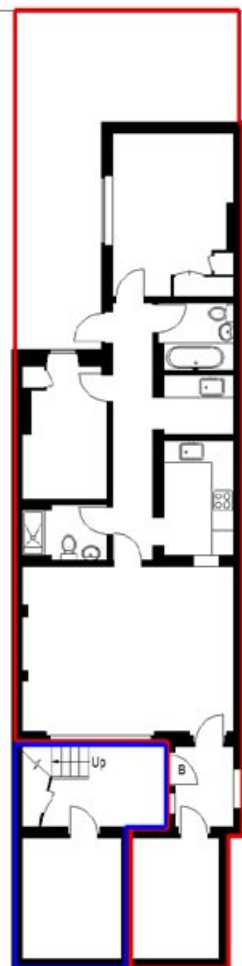


Second Floor = 1237 sq ft / 115 sq m (Excluding Void)

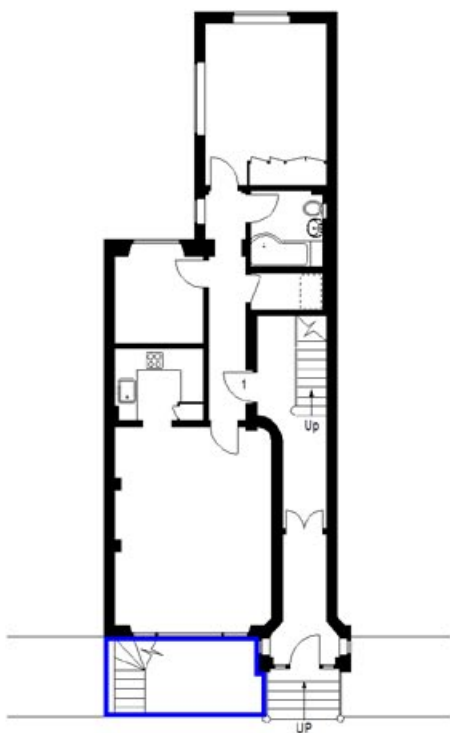


First Floor = 1776 sq ft / 165 sq m (Excluding Void)

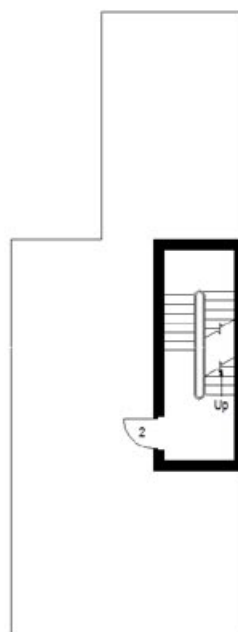




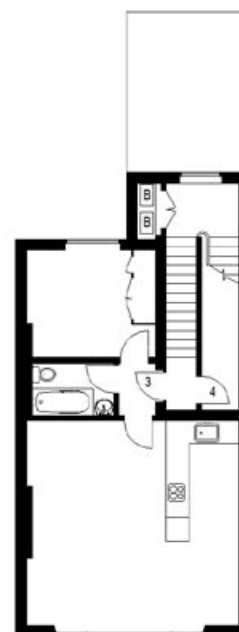
Lower Ground Floor Plan  
scale 1:200



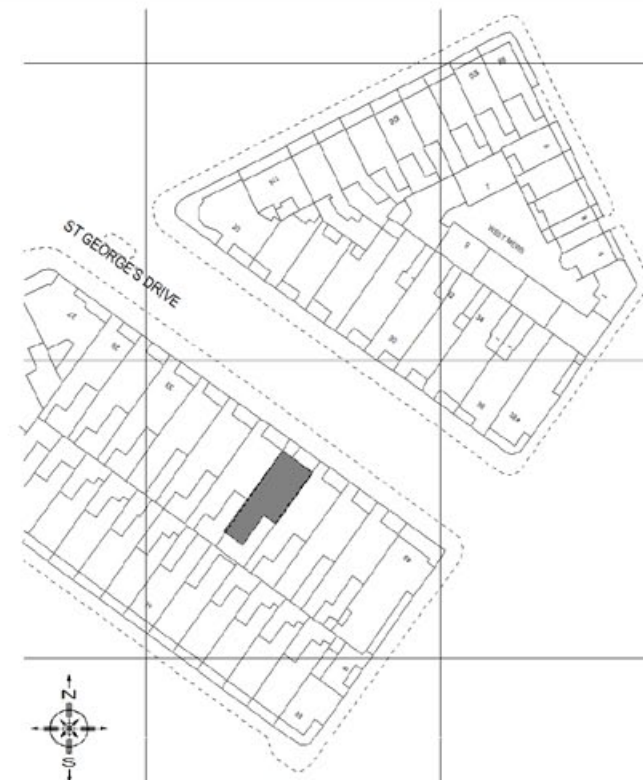
Ground Floor Plan  
scale 1:200



First Floor Plan  
scale 1:200



Second Floor Plan  
scale 1:200



Ordnance Survey (c) Crown Copyright 2013. All rights reserved. Licence number 100020449




Site Location Plan scale 1:1250

Project  
Basement Flat,  
41 St Georges Drive,  
London, SW1V 4DG

Scale  
1:1250 / 1:200

Sheet Size  
A4

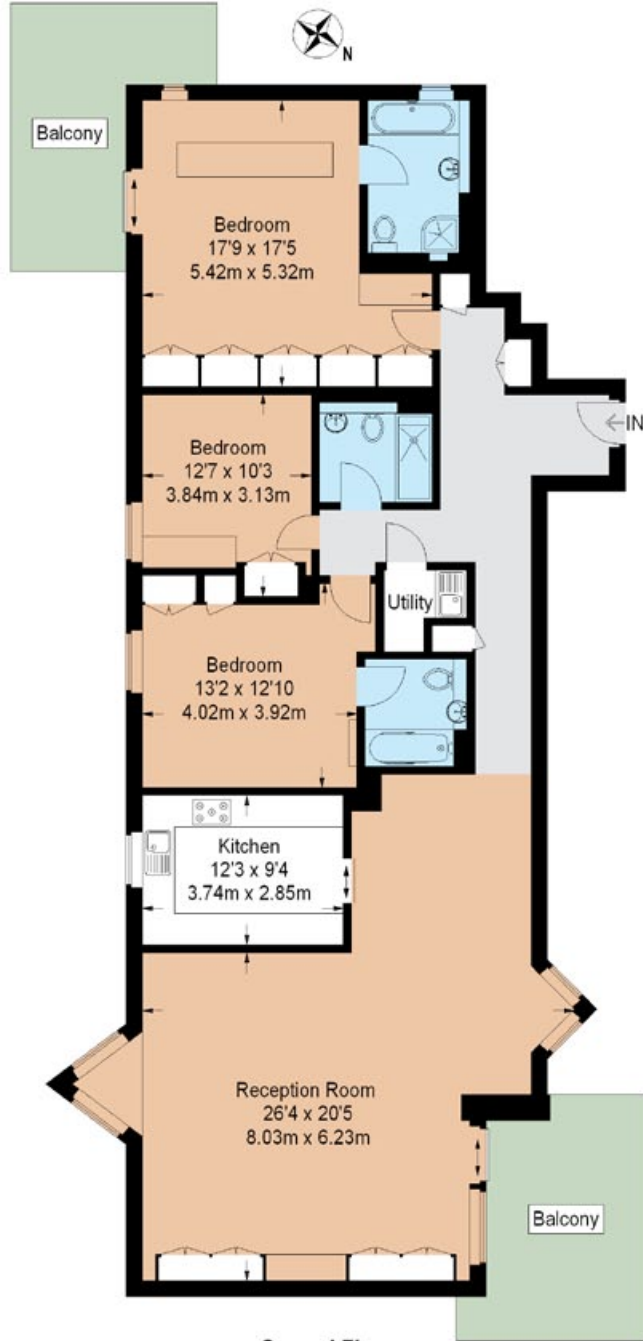
Job Ref. No  
82506

-  = location of building
-  = extent of demised premises
-  = communal area



## Waterside Point

Approximate Gross Internal Area  
1698 sq ft / 157.8 sq m



Not to scale, for guidance only and must not be relied upon as a statement of fact.  
All measurements and areas are approximate only and have been prepared in  
accordance with the current edition of the RICS Code of Measuring Practice.

## Commonside West

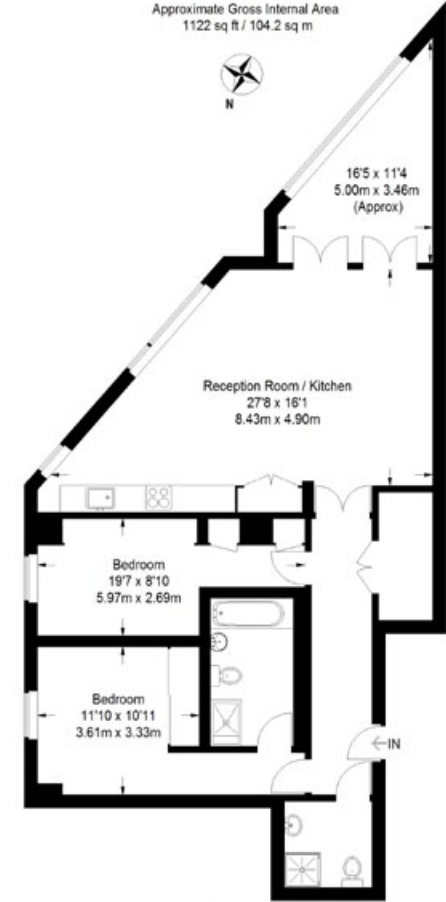
Approximate Gross Internal Area  
801 sq ft / 74.4 sq m



Not to scale, for guidance only and must not be relied upon as a statement of fact.  
All measurements and areas are approximate only and have been prepared in  
accordance with the current edition of the RICS Code of Measuring Practice.

## Neo Bankside

Approximate Gross Internal Area  
1122 sq ft / 104.2 sq m



Not to scale, for guidance only and must not be relied upon as a statement of fact.  
All measurements and areas are approximate only and have been prepared in  
accordance with the current edition of the RICS Code of Measuring Practice.









FIRST FLOOR



SECOND FLOOR



GROUND FLOOR



THIRD FLOOR











